

# Ventus Upgrade Manual

## Contents

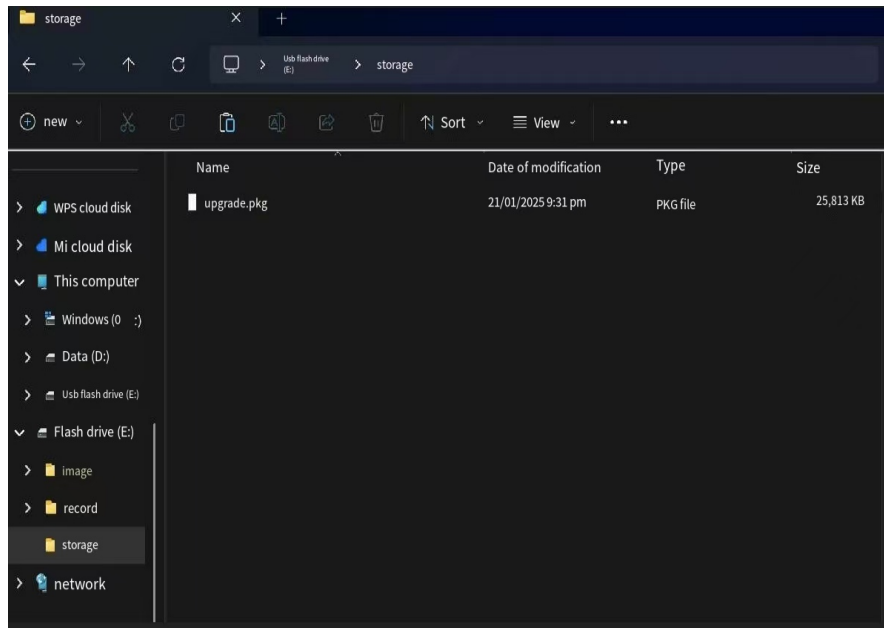
1. Physical connection .....	1
2. Copy the firmware to the device directory .....	2
3. Device Upgrade .....	2
4. Firmware version confirmation .....	3

## 1. Physical connection

Please use USB-to-TypeC interface cable to connect the device and computer as shown in the picture below.



## 2. Copy the firmware to the device directory



## 3. Device Upgrade

Upgrade the device from following path:

**【Menu】 -> 【System】 -> 【Update】**





From the below path to check the device version is matched or not.  
【Menu】 -> 【System】 -> 【Version】

